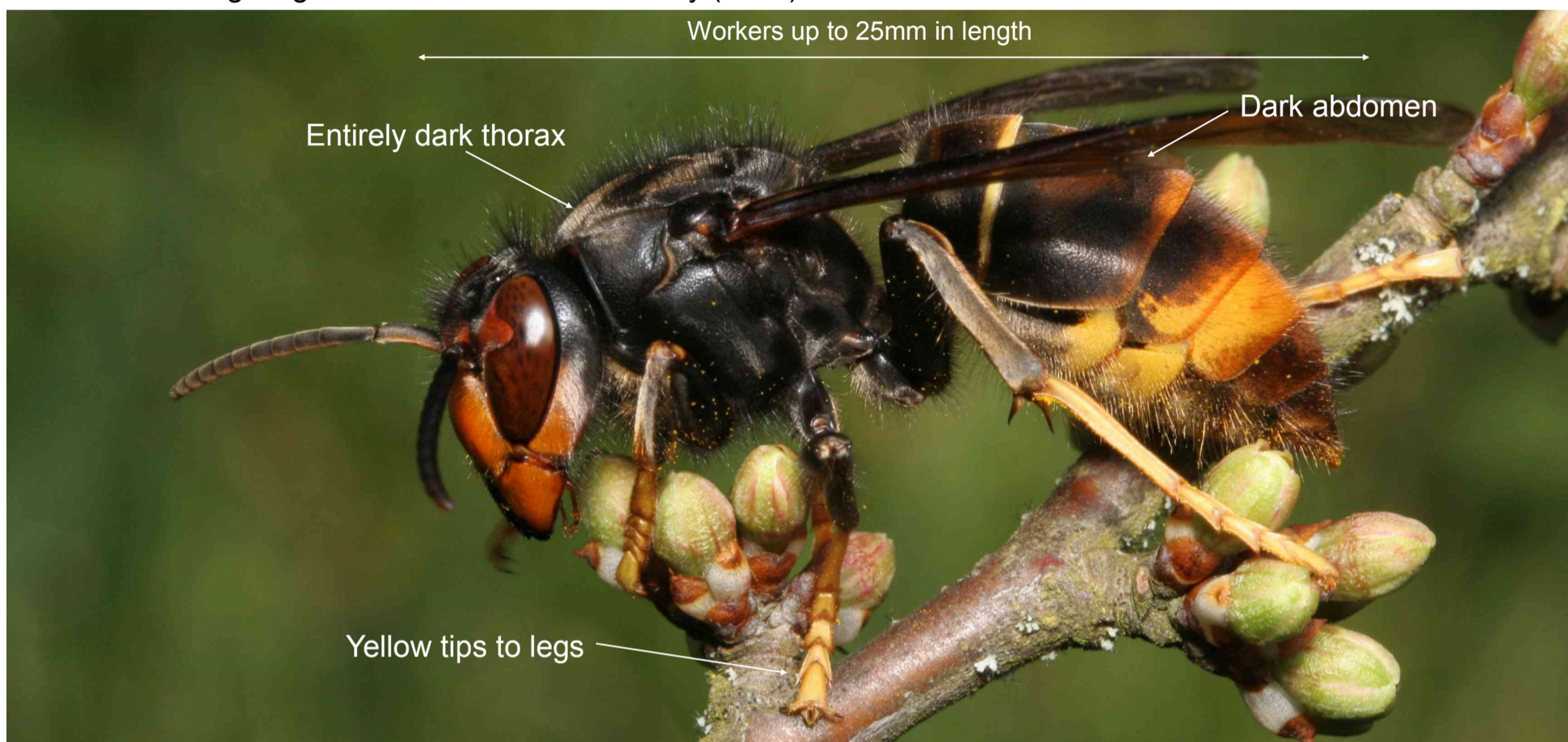


## ASIAN HORNET

*Vespa velutina*

### What is it?

An invasive non-native hornet originally from Asia. Suspected records should be reported immediately. A highly aggressive predator of native insects, posing a significant threat to honey bees and other pollinators. Accidentally introduced to France in 2004 where it spread rapidly. In 2016 the first UK sighting was confirmed in Gloucestershire, and a second sighting was confirmed more recently (2017) in North Devon.



### Where might I see it?

Most likely to be seen close to bee hives - bee keepers should be alert. Active from February to November in suburban areas in the south of England and Wales, or around major ports.

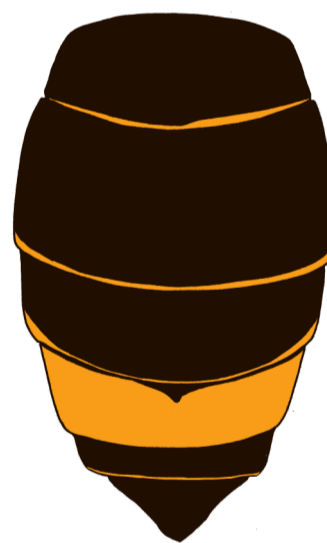
### What does it look like?

Distinctive hornet, smaller than our native species. A key feature is the almost entirely dark abdomen, except for the 4th segment which is yellow.

- ☐ Slightly smaller than native hornet
- ☐ Dark abdomen, 4th segment yellow
- ☐ Bright yellow tips to legs (native hornet dark)
- ☐ Entirely brown or black thorax (native hornet more orange)

Asian Hornet abdomen

Native Hornet abdomen



- ☐ Makes very large nests



- ☐ 'Hawks' outside honey bee colonies killing bees as they attempt to defend their hive

### **DANGER!**

This hornet stings. Do not disturb an active nest. Seek advice using the details below.

For more information or to report any sightings please email:

**[alertnonnative@ceh.ac.uk](mailto:alertnonnative@ceh.ac.uk)**

If you have an iPhone or Android, download the free recording app:

**Asian Hornet Watch**