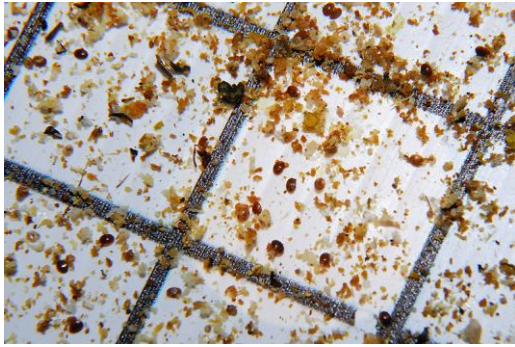


Enough equipment?...

Run out of equipment and space yet? I am close, all my colonies have been split, bait hives have worked. It has been a busy month or so and some weeks I feel like I have lived in my beesuit.

I am hoping most of the swarming should be over by now but watch out for the colonies that swarmed early i.e from the end of April to beginning of May, they have had time to develop and expand quickly and may try again, even the ones with this year's queens need to be checked.



Early July is a good time to do another check on varroa levels, so, if necessary, treatment can be applied in good time, remembering that not all treatments can be given with honey supers on.

Have you enough supers and frames for the July/August nectar flow? Hopefully, your colonies that have built up large stores of nectar and honey during the spring will need more space to store honey. The queen's laying capacity is reducing now, and any space will be used to

store nectar.

Nectar takes up more room than honey. We still have the heather and balsam flows as well as summer flower nectars to go through yet. Clover is in flower now and our garden is covered in Bumbles, as we have left it unmown for a few weeks now.

I will start looking at my splits and think about uniting colonies, not just because I am running out of space, but to build up larger number of bees for foraging to increase honey production.

This is a good time to replace older, bad tempered or weaker queens with new young queens from this year's swarms and splits. Young queens lay longer into the autumn months giving colonies more winter bees and making them stronger to survive the winter and build up in the spring.

I did an article on uniting colonies last year but it can still be found in the previous Buzz topics below.



Have you got access to equipment to extract your honey? Do you have enough jars and lids? Now is the time to get them. The club has a honey extractor that is available to borrow, and details are on the membership page of the website. Some areas extract honey by the end of July, but others wait until September after the balsam flow has finished. Honey jars can be washed and reused, but it is important to have new, clean lids as they will rust if washed. Particularly important if you are considering entering exhibits in the Honey Show (note to self, start thinking about preparation for the show now)

We are coming to the exciting time when beekeepers are coming to the end of the season and waiting for the results of all our hard work since last August - honey. Fingers crossed that the next few weeks will be fine and warm, with just enough rain at night to keep the nectar flowing!